

SLAB
DE
SI
GN
S'23

GRANICER
CERAMICA INDIANA

"Excellence Backed by
Experience"

GRANICER
CERAMICA INDIANA

ASIA'S LARGEST SLAB MANUFACTURING UNIT



GRANICER
CERAMICA INDIANA

Granicer is the house of Asia's largest slab manufacturing unit and Asia's best new tile plant producing unmatched and unrivaled porcelain slabs in a remarkable range of colossal formats and exquisite finishes.

STRENGTH OF GRANICER

1

Production capacity of 70,000 sq m/day for large format slabs under one roof.

2

Revolutionary new sizes & finishes with thicknesses ranging from 6mm to 20mm.

3

Versatile range of porcelain, stoneware, full body & through body veining slabs.

4

The only plant in India with zero water waste technology.

5

Latest lineups with the world's most advanced technology.

6

First time in India the latest digital printers of Infinity models produce full digital printing products with 4+ 12 color bars in both lines.

7

First time in the Indian ceramic industry Television-Auto is the latest generation of automatic sorting system manufactured by Italtvision Italy.

8

First time in India LB Technology with easy color boost, technological tower, and automatic powder handling.

9

A comprehensive ceramic laboratory center in collaboration with Sassuolo Lab Italy.

10

Awarded the glorious title of - Best New Tile Plant in Asia at Tecnawards 2022 by ACIMAC!





PORCELAIN STONEWARE SLABS

SURREAL AESTHETICS & DIVERSITY OF NARRATIVES

Witness aesthetics and narratives deriving their inspiration from nature and pairing it best with technology.

The exclusive range of porcelain slabs from Granicer in colossal sizes brings together an eclectic melange of assortment inspired by natural marbles, stones, and terrain and recreated in stunning, technically-rich, and durable porcelain slabs of enormous sizes.

Recreated masterfully the slabs incorporate natural veining, realistic tones, design depth, and more of any natural stone and altogether eliminate the limitation of these stones like prone to staining, high maintenance, and more.

PORCELAIN STONEWARE SLABS

COMPREHENSIVE ARCHITECTURE RESOLUTIONS

Conceptualized and meticulously
crafted tiling solutions for the
dynamic design sensibilities and
needs of modern-day architecture.

For the ever-evolving sense of space, taste, style, and preference of modern-day architecture, Granicer brings a dynamic solution that fits the changing narratives of urban living through colossal, remarkably functional, and versatile surfaces which advance as you progress with your spaces.



PORCELAIN STONEWARE SLABS

9+ EXCLUSIVE SURFACES

for conventional luxury and contemporary efficiency in modern-day homes and spaces.

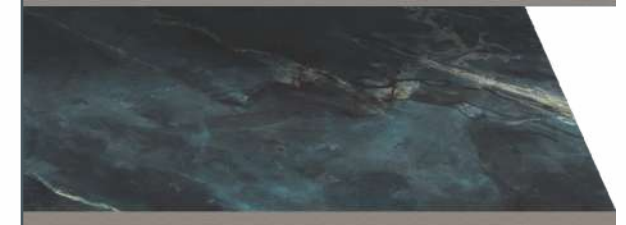
A surface experience and revolution in making the exclusive and all-new range of finishes from Granicer will be breaking boundaries and setting new benchmarks in the industry altogether offering aesthetics and functionality alike.



ELEGANCE



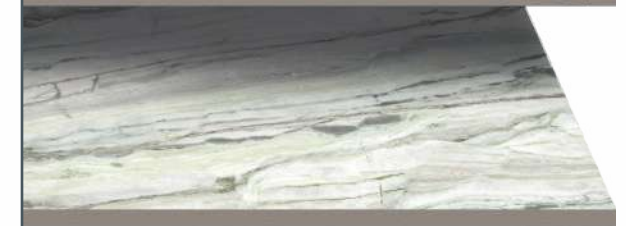
LUMINOUS



REPOSE



GRACE



SAHARA



GAMMA



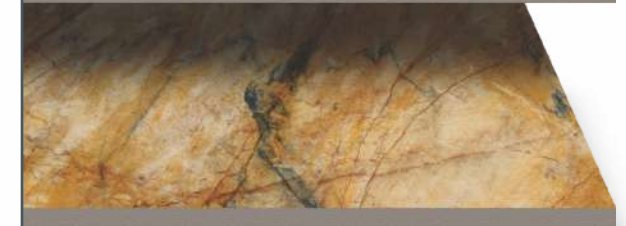
CRYSTAL POLISH



GRAVEL



GALAXY



GRANICER

CERAMICA INDIANA

PORCELAIN STONEWARE SLABS

ONE ROOF MULTIPLE SIZES

Discover the widest range of colossal formats under one roof crafted for greater utility & aesthetics.

Pushing boundaries of tile formats the magnificent array of colossal porcelain slabs from Granicer offers a functional range of sizes which is crafted keeping various spaces,

their format needs, cutting-handling needs, and seamless lay in mind to present with an encompassing solution in one place - at Granicer.

160x320cm

62,99"x125,98"
1600x3200mm

120x320cm

47,24"x125,98"
1200x3200mm

120x280cm

47,24"x110,23"
1200x2800mm

120x240cm

47,24"x94,48"
1200x2400mm

160x160cm

62,99"x62,99"
1600x1600mm

120x120cm

47,24"x47,24"
1200x1200mm



PORCELAIN STONEWARE SLABS

ONE SOLUTION FOR EVERY SPACE

Finest at form, function, finish, and formats, the exclusive range is ideal for application in every space.

Designed and curated by industry experts the exclusive range of porcelain slabs with its wide range of designs, aesthetics, formats, and finishes forms a collection that is apt for extensive application.

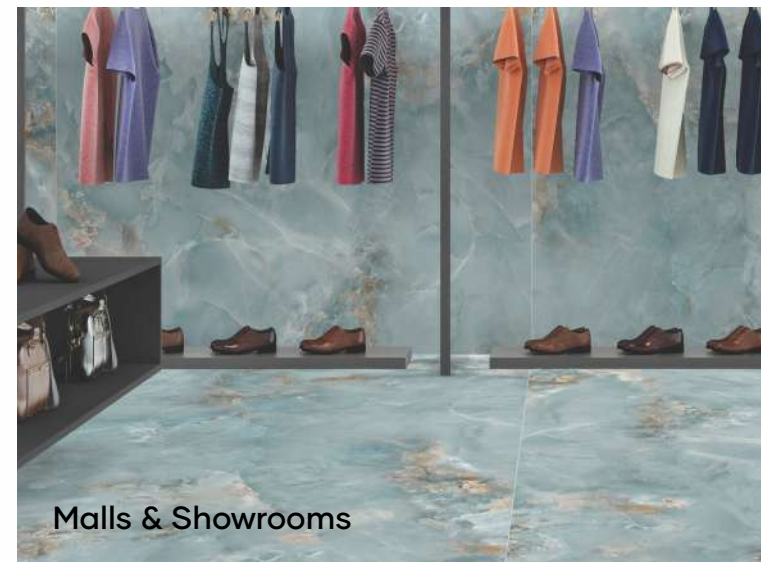
The slabs are perfect solutions for luxurious projects, malls & showrooms, commercial spaces, residential spaces, and even outdoors and bathrooms making the collection - one solution for every space.



Residential Spaces



Café & Hotels



Malls & Showrooms



Kitchen



Bathrooms



Corridor



Outdoor & Facade



Interior

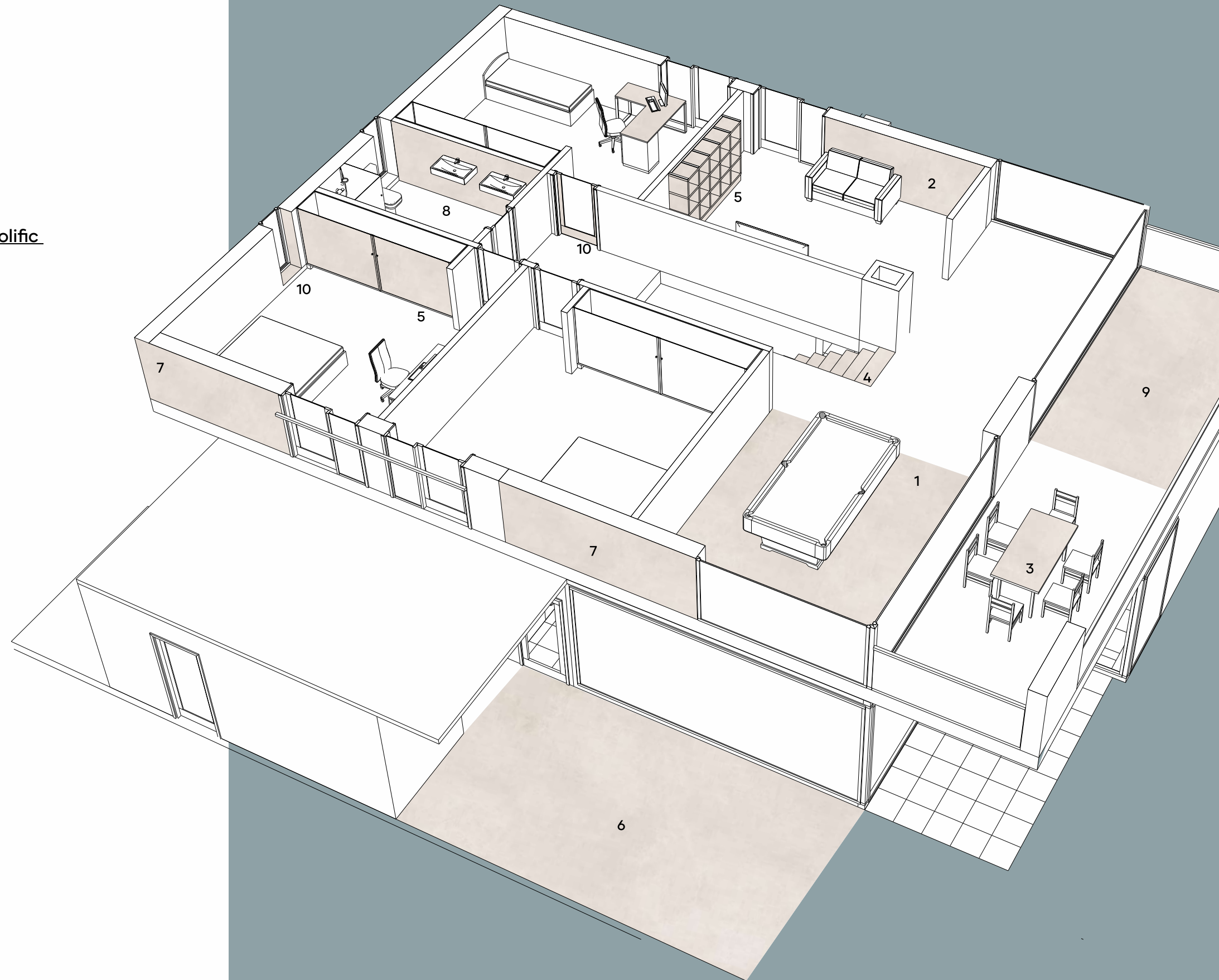
COMPLETE TILING SOLUTION

In a world of compromises, Granicer lets you make none with its prolific range of porcelain slabs apropos for a wide range of applications.

- | | | | |
|---|-----------|----|----------------------|
| 1 | Floor | 6 | Outdoor |
| 2 | Wall | 7 | Facade |
| 3 | Tabletop | 8 | Bathroom |
| 4 | Staircase | 9 | Balcony |
| 5 | Furniture | 10 | Door & Window Frames |

Explore a whole new world of extensive application possibilities with the modern, functional, aesthetic, and just apt range of colossal porcelain slabs.

Designed for the ever-changing dynamics of modern-day lifestyle the slabs present unending opportunities for application in spaces.



PEERLESS FACTORS TO SELECT

Granicer slabs for tiling various areas such as residential, commercial, or public and cladding furniture and more.

Easy Installation



Easy to lay, cut & drill



Fewer joints for greater laying continuity



Easy to install, clean & care

Health & Safety



Suitable for contact with food



Prevents bacterial growth



Non-slip surface

Natural Resistance



Fire & frost resistance



Resistant to thermal shocks



Resistant to acid & stains





SATVARIO LATTE

BIANCO BELLO

CALACATTA EXTREME

CALACATTA OBLIQUE



Sizes:
160x320cm, 120x320cm
120x280cm, 120x240cm
160x160cm, 120x120cm



Thickness:
6mm, 9mm
12mm, 15mm
20mm



SURFACE:
ELEGANCE

SURFACE:
ELEGANCE

SURFACE:
ELEGANCE

SURFACE:
ELEGANCE





BIANCA GREY



SURFACE:
ELEGANCE

Sizes:
160x320cm, 120x320cm
120x280cm, 120x240cm
160x160cm, 120x120cm



BIANCA FANTA



SURFACE:
ELEGANCE



DULCE BIANCO



SURFACE:
ELEGANCE



MARMOLUZ MORMORE



SURFACE:
ELEGANCE

Thickness:
6mm, 9mm
12mm, 15mm
20mm





YASHI WHITE



SURFACE:
ELEGANCE



PATAGONIA BIANCO



SURFACE:
ELEGANCE



ARBESCATO OSCURO



SURFACE:
ELEGANCE



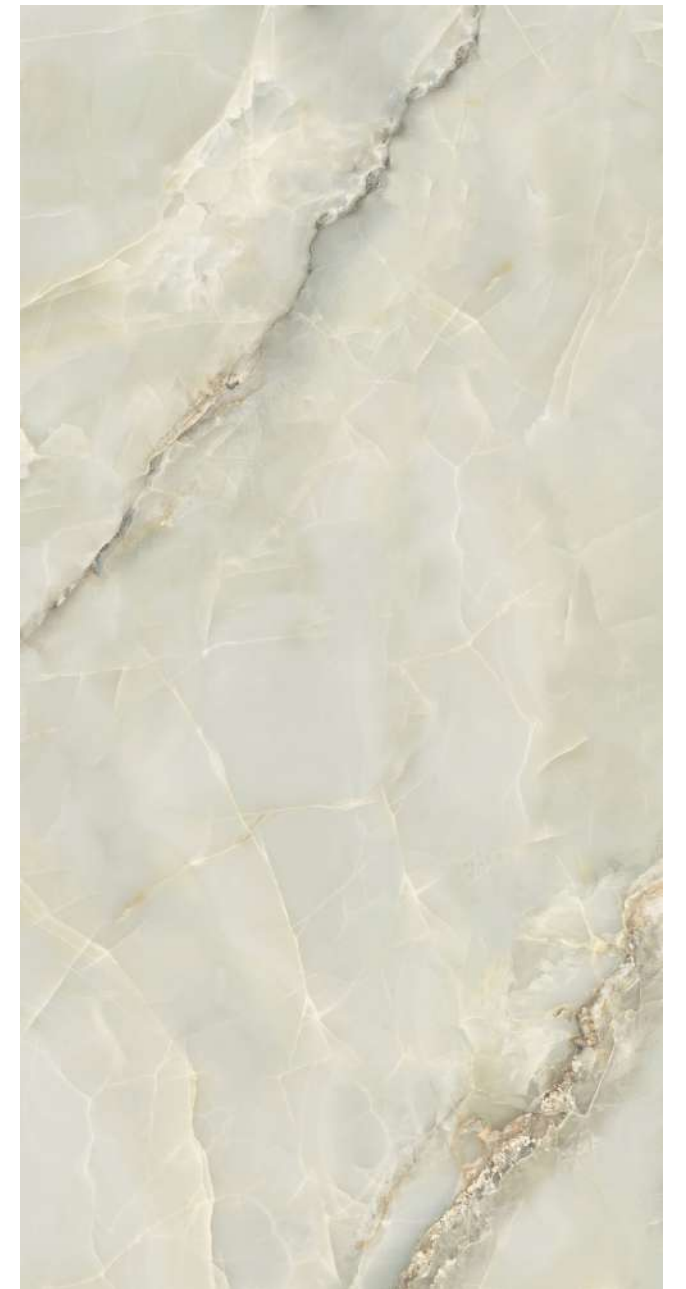
ARABESQUE BIANCO



SURFACE:
ELEGANCE



Thickness:
6mm, 9mm
12mm, 15mm
20mm



RIVER ONYX GRAY

ROLEX ONXY MINT



Thickness:
6mm, 9mm
12mm, 15mm
20mm

SURFACE:
ELEGANCE

SURFACE:
ELEGANCE



PREVIEW OF

RIVER ONYX GRAY

Sizes:
160x320cm, 120x320cm
120x280cm, 120x240cm
160x160cm, 120x120cm



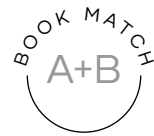
BRECHA CREMA



SURFACE:
ELEGANCE



DOMINO ASH



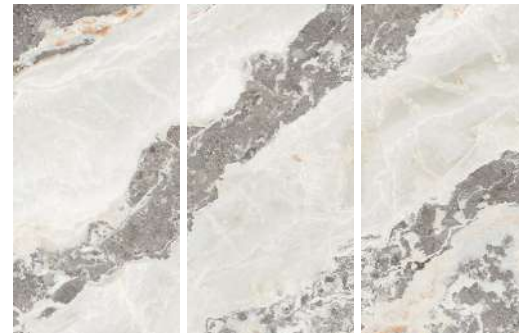
SURFACE:
ELEGANCE



ICE STONE



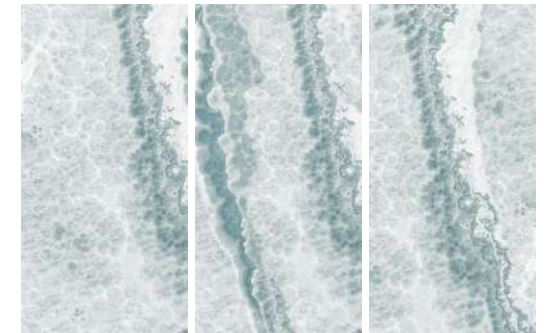
SURFACE:
ELEGANCE



COSTA ONYX AZUL



SURFACE:
ELEGANCE



Thickness:
6mm, 9mm
12mm, 15mm
20mm



MARINA TRAVERTINO BEIGE

ARMANI DI GRIS



Thickness:
6mm, 9mm
12mm, 15mm
20mm

SURFACE:
ELEGANCE

SURFACE:
ELEGANCE



PREVIEW OF

MARINA TRAVERTINO BEIGE

Sizes:
160x320cm, 120x320cm
120x280cm, 120x240cm
160x160cm, 120x120cm



VITRUM GRIGIO

DIDYMA SILVER



DELECCATE GREY

MELISA GREY



Sizes:
160x320cm, 120x320cm
120x280cm, 120x240cm
160x160cm, 120x120cm



SURFACE:
ELEGANCE



Thickness:
6mm, 9mm
12mm, 15mm
20mm



SURFACE:
ELEGANCE





NORD LIGHT GREY



SURFACE:
ELEGANCE



JASTO ROMANO



SURFACE:
ELEGANCE



Sizes:
160x320cm, 120x320cm
120x280cm, 120x240cm
160x160cm, 120x120cm

Thickness:
6mm, 9mm
12mm, 15mm
20mm



ROYAL GREY WILLIAM



SURFACE:
ELEGANCE





BIANCA FORESTA GOLD

LUCENTEZZA GRIS



Thickness:
6mm, 9mm
12mm, 15mm
20mm

SURFACE:
LUMINOUS

SURFACE:
LUMINOUS



PREVIEW OF

BIANCA FORESTA GOLD

Sizes:
160x320cm, 120x320cm
120x280cm, 120x240cm
160x160cm, 120x120cm

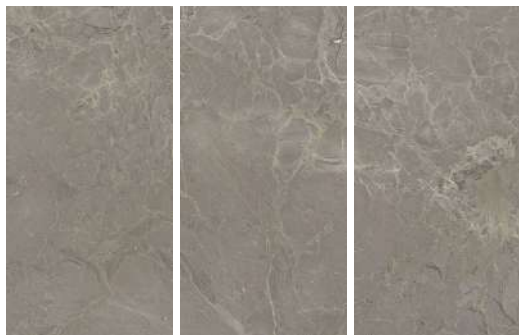


HEMSTRING GRAY



SURFACE:
LUMINOUS

Sizes:
160x320cm, 120x320cm
120x280cm, 120x240cm
160x160cm, 120x120cm



RICH TAUPE



SURFACE:
LUMINOUS

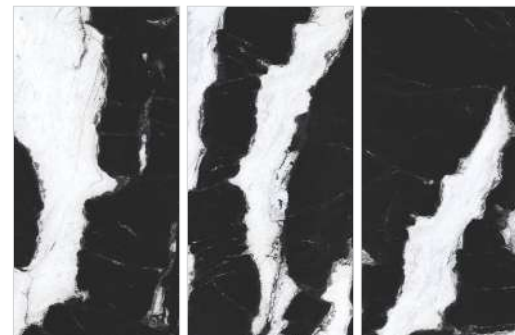


BLACK PANDA



SURFACE:
LUMINOUS

Thickness:
6mm, 9mm
12mm, 15mm
20mm



PIETRA GRIGIO



SURFACE:
LUMINOUS





CARNIGO GRIGIO

BENEVENTO BRONZE



Sizes:
160x320cm, 120x320cm
120x280cm, 120x240cm
160x160cm, 120x120cm



SURFACE:
LUMINOUS



OPERA ONYX VERDE



SMOGY AZUL

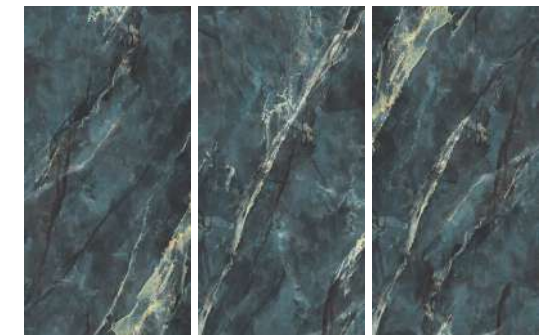


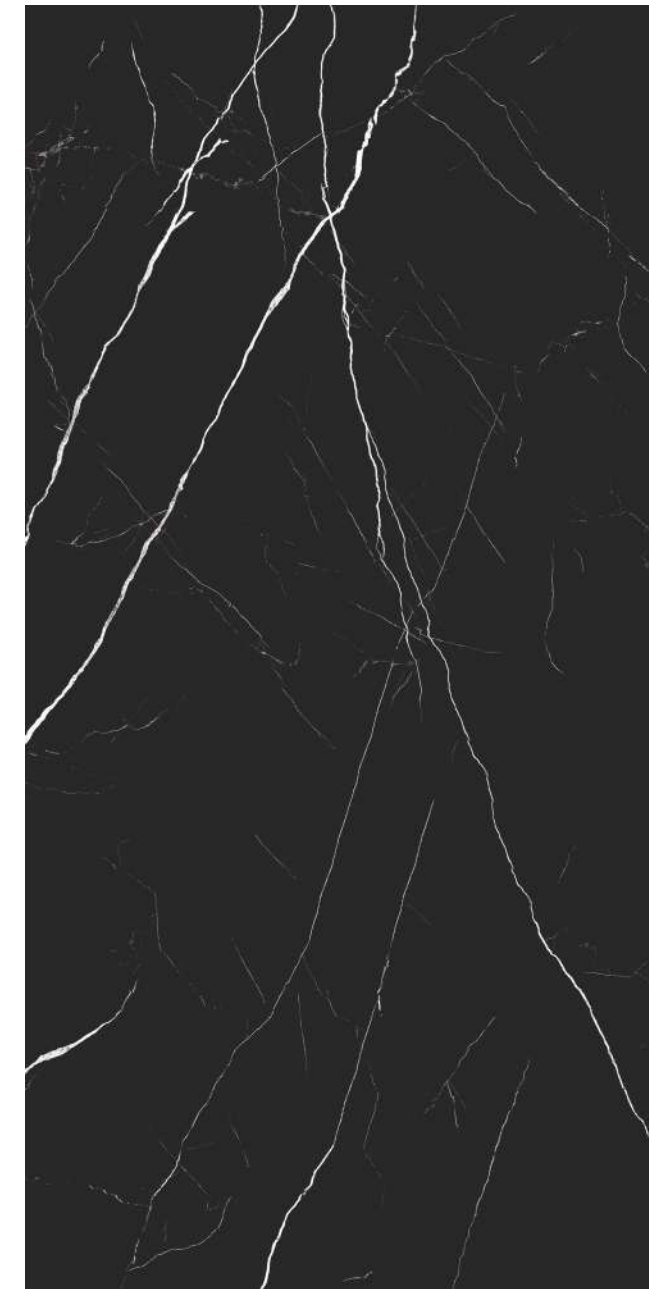
Thickness:
6mm, 9mm
12mm, 15mm
20mm



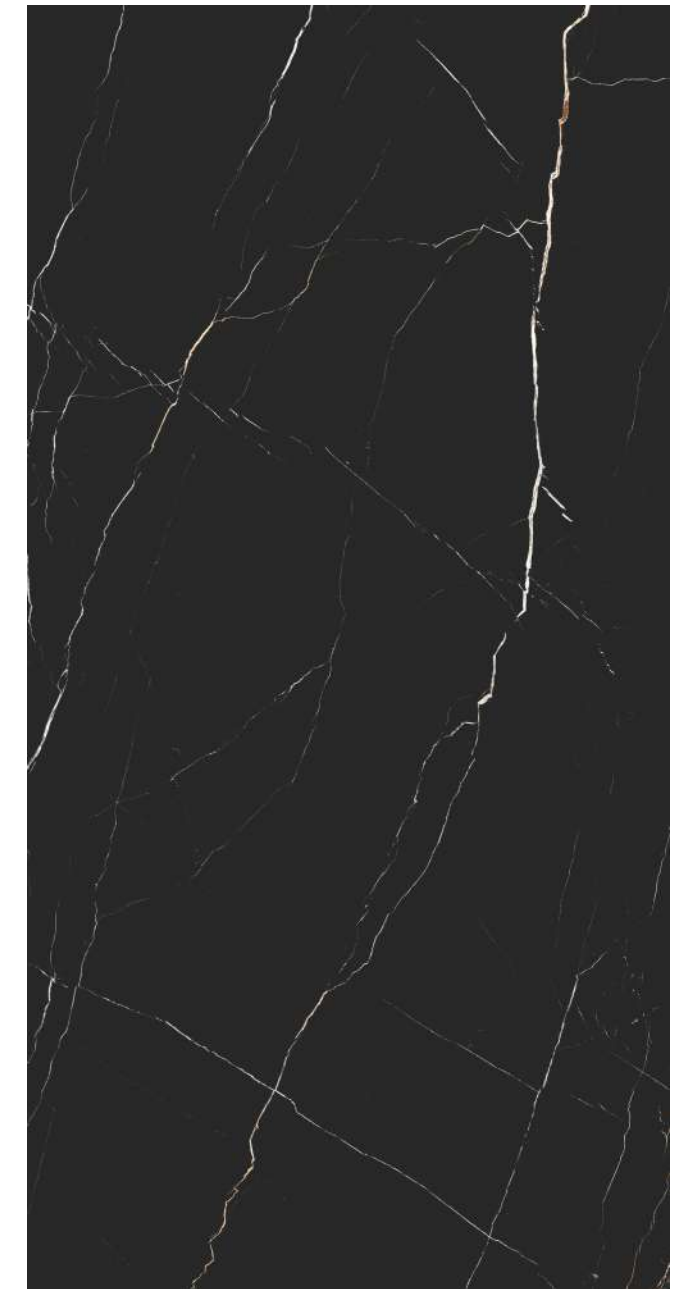
SURFACE:
LUMINOUS

SURFACE:
LUMINOUS





ROYAL BLACK MARQUINA



MARQUINA OLSPE

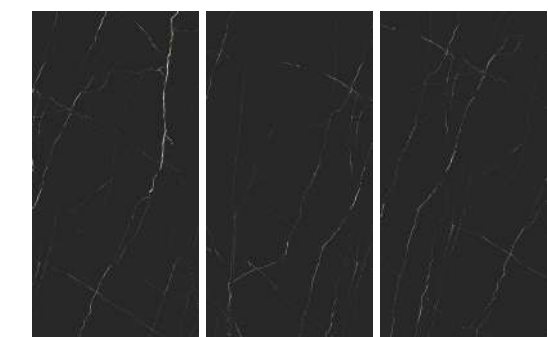
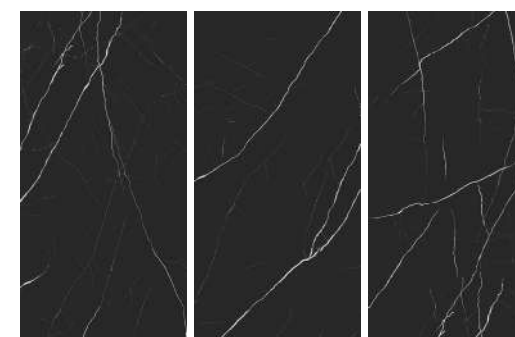


SURFACE:
LUMINOUS

Thickness:
6mm, 9mm
12mm, 15mm
20mm



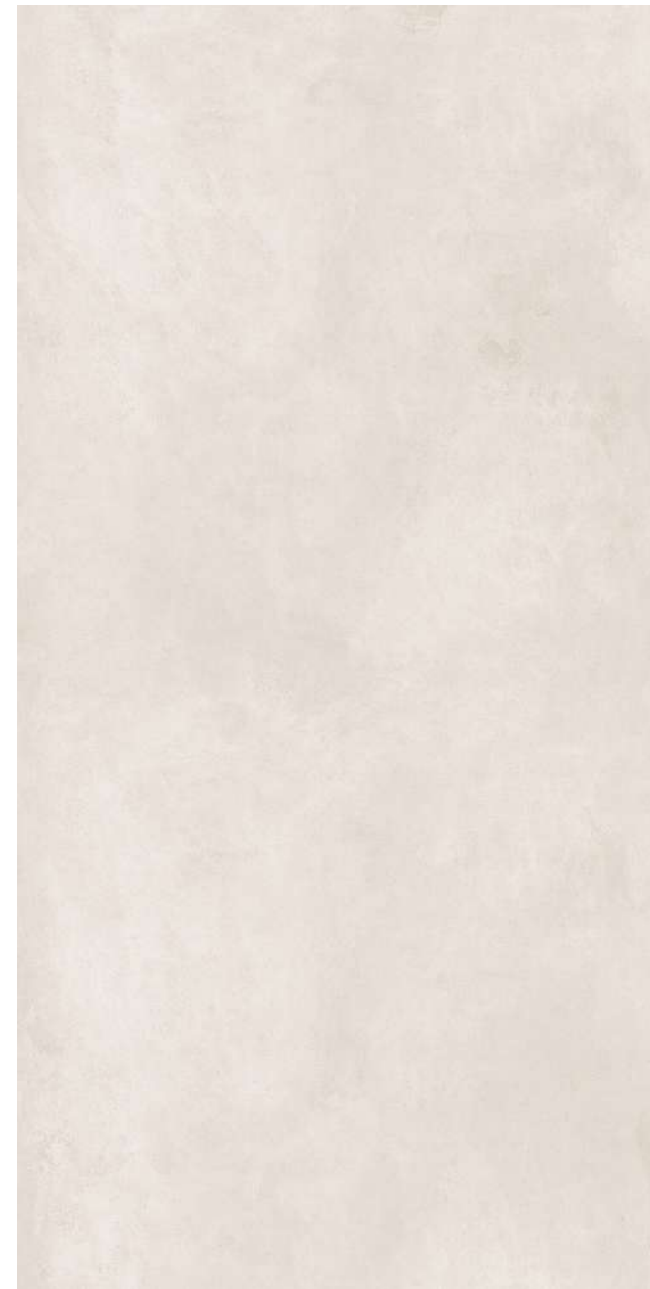
SURFACE:
LUMINOUS



PREVIEW OF

ROYAL BLACK MARQUINA

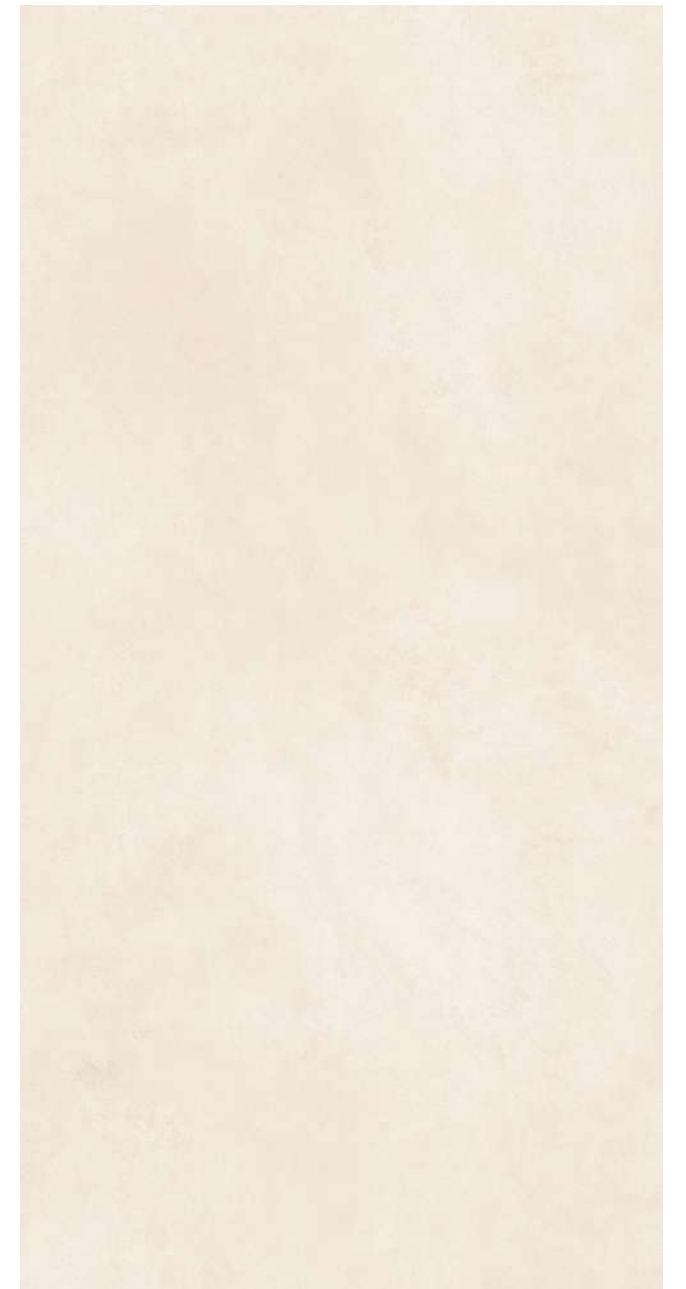
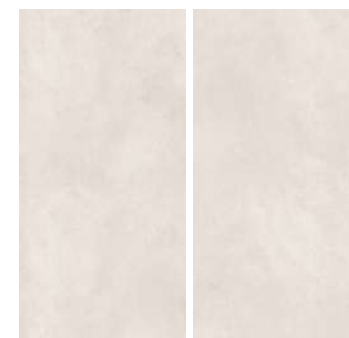
Sizes:
160x320cm, 120x320cm
120x280cm, 120x240cm
160x160cm, 120x120cm



KRATER PERLA



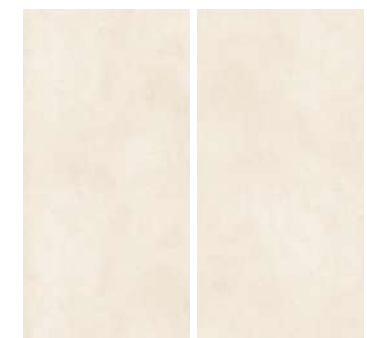
SURFACE:
REPOSE



KRATER NIEVE



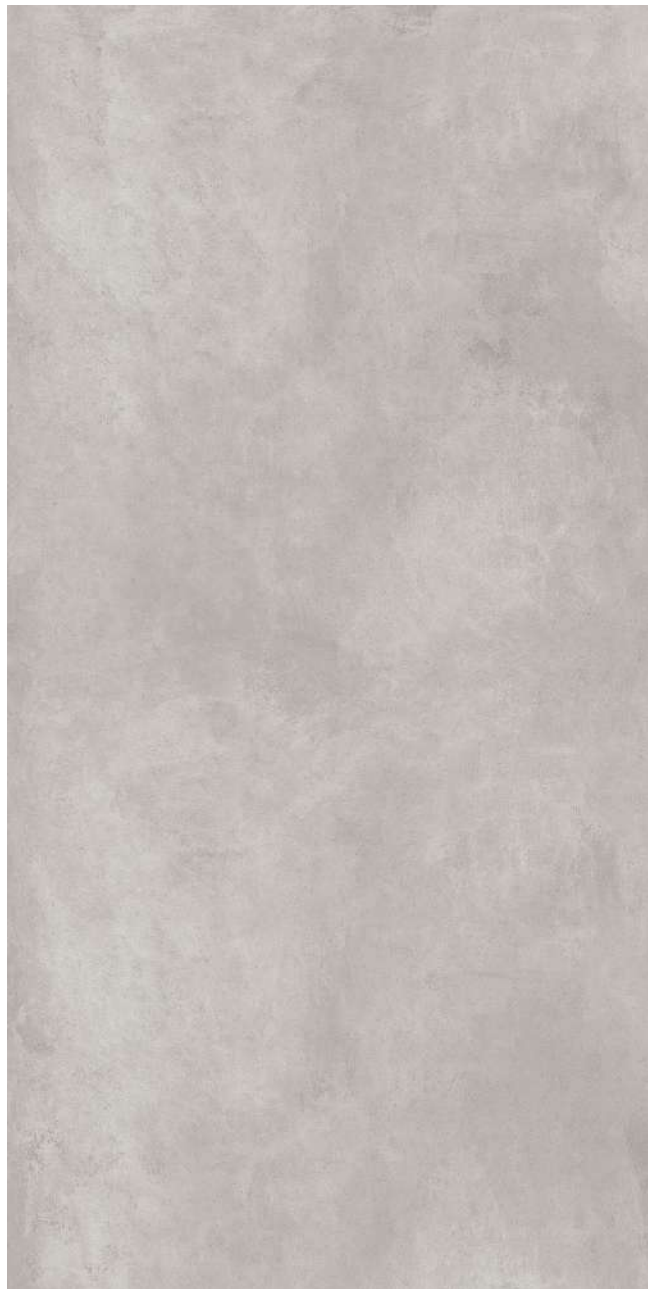
SURFACE:
REPOSE



Thickness:
6mm, 9mm
12mm, 15mm
20mm

PREVIEW OF
KRATER PERLA

Sizes:
160x320cm, 120x320cm
120x280cm, 120x240cm
160x160cm, 120x120cm



KRATER CEPPO

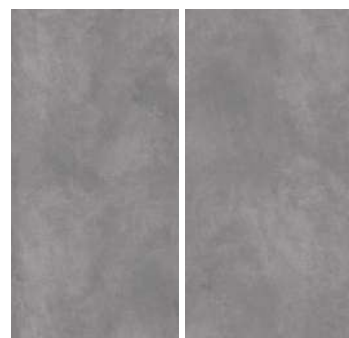


SURFACE:
REPOSE

Sizes:
160x320cm, 120x320cm
120x280cm, 120x240cm
160x160cm, 120x120cm



SURFACE:
REPOSE



KRATER NERO



KRATER HUMO

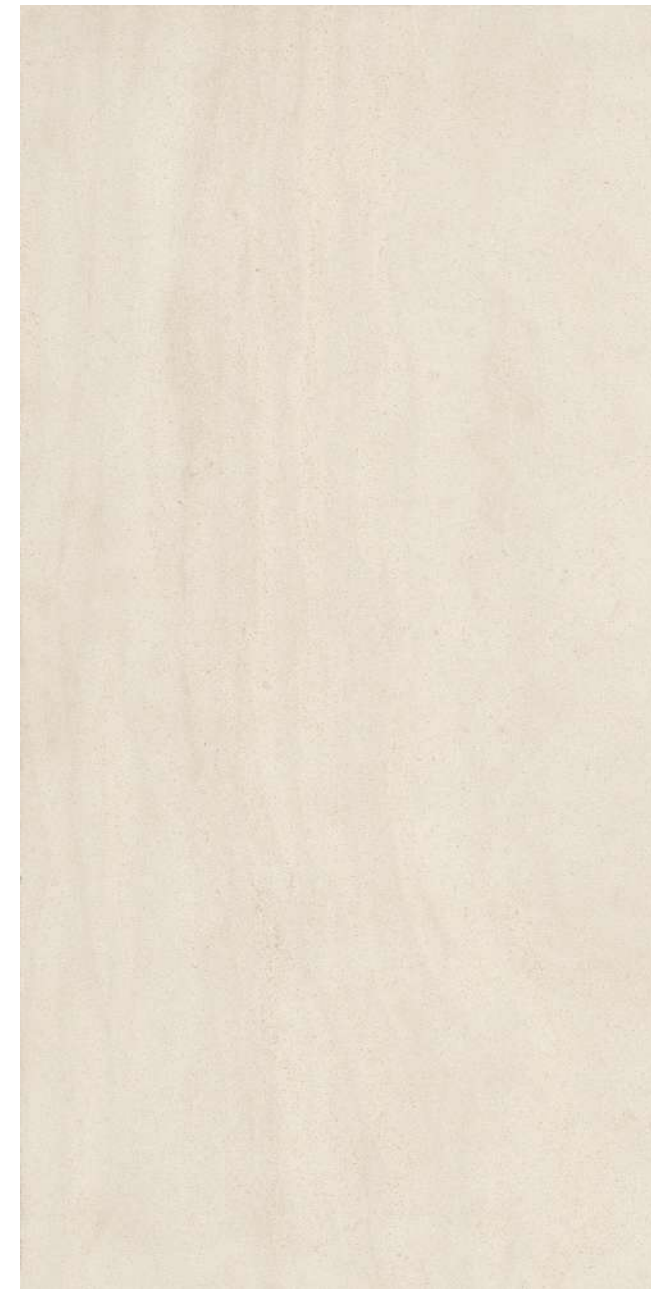


SURFACE:
REPOSE

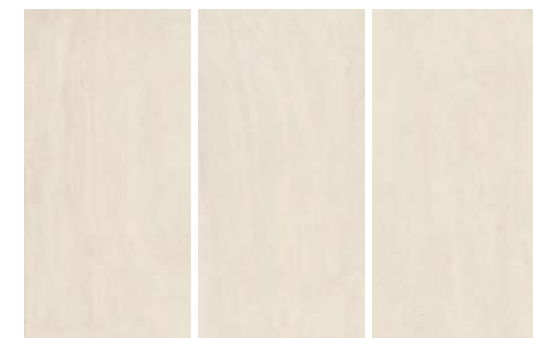
Thickness:
6mm, 9mm
12mm, 15mm
20mm



SURFACE:
REPOSE



LIMESTONE CREMA





ATHENS SLATE

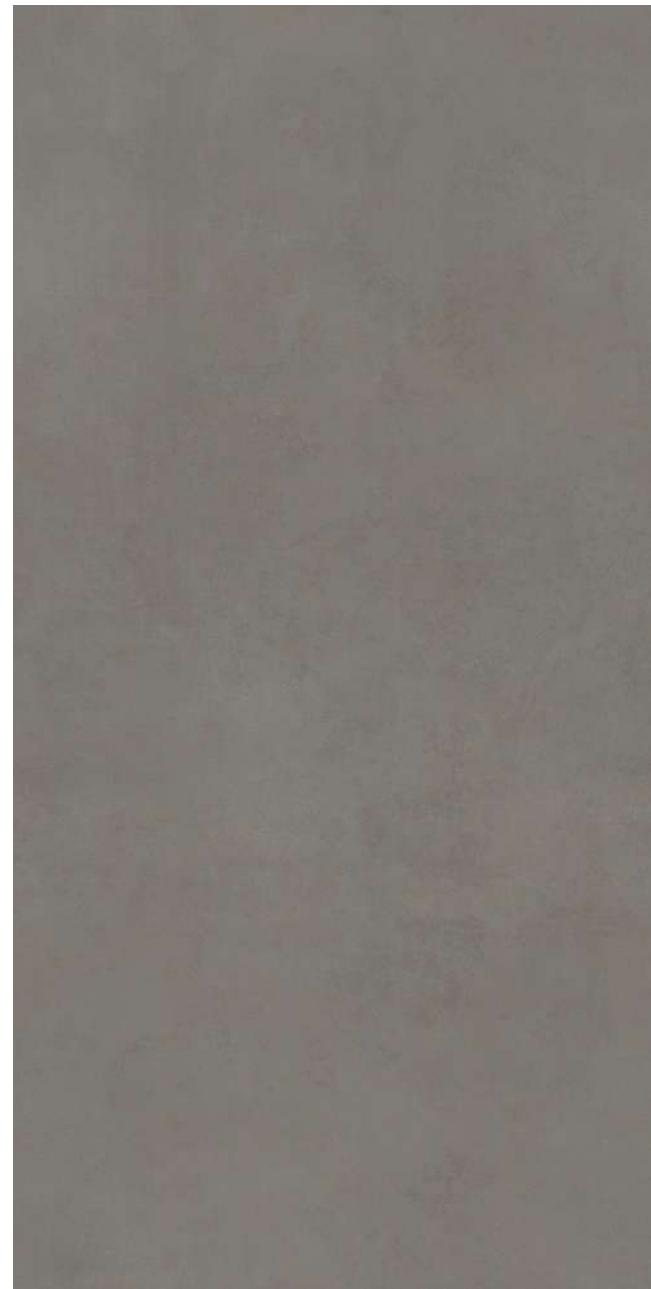
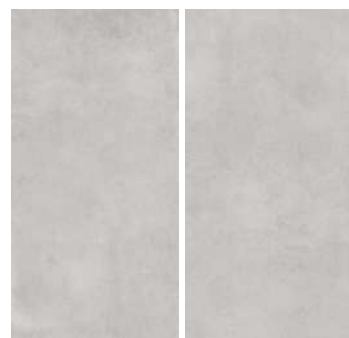


SURFACE:
REPOSE

Sizes:
160x320cm, 120x320cm
120x280cm, 120x240cm
160x160cm, 120x120cm



SURFACE:
REPOSE



ATHENS GREY



MONCAYO GREY

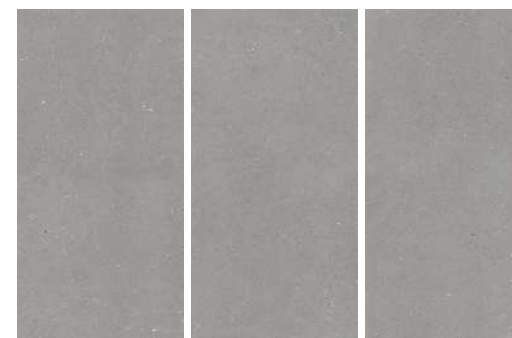


SURFACE:
REPOSE

Thickness:
6mm, 9mm
12mm, 15mm
20mm



SURFACE:
REPOSE



PIZZARA SLATE





DESERT GREY



SURFACE:
REPOSE



HEATHER NERO



SURFACE:
REPOSE



Thickness:
6mm, 9mm
12mm, 15mm
20mm

PREVIEW OF
DESERT GREY

Sizes:
160x320cm, 120x320cm
120x280cm, 120x240cm
160x160cm, 120x120cm



ARBESCATO OSCURO



SURFACE:
GRACE



ARABESQUE BIANCO



SURFACE:
GRACE



CALACATTA FAVOLOSO



SURFACE:
GRACE



PANORAMA GREEN



SURFACE:
GRACE

Sizes:
160x320cm, 120x320cm
120x280cm, 120x240cm
160x160cm, 120x120cm

Thickness:
6mm, 9mm
12mm, 15mm
20mm





DELECATE GREY



SURFACE:
GRACE



MELISA GREY



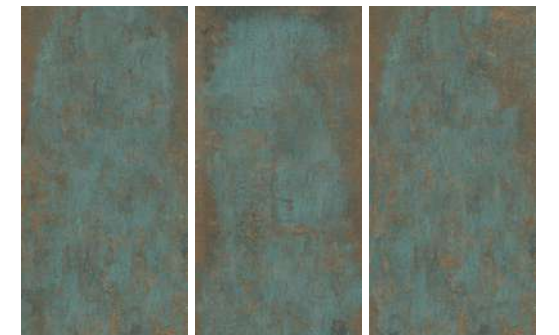
SURFACE:
GRACE



GLAM OXIDE



SURFACE:
GRACE



Thickness:
6mm, 9mm
12mm, 15mm
20mm



RIVERA OSSIDO

RIVERA POLVER



Thickness:
6mm, 9mm
12mm, 15mm
20mm

SURFACE:
SAHARA

SURFACE:
SAHARA



PREVIEW OF
RIVERA OSSIDO

Sizes:
160x320cm, 120x320cm
120x280cm, 120x240cm
160x160cm, 120x120cm



BELGIA BIANCO



Sizes:
160x320cm, 120x320cm
120x280cm, 120x240cm
160x160cm, 120x120cm

SURFACE:
GAMMA



NEO ONYX



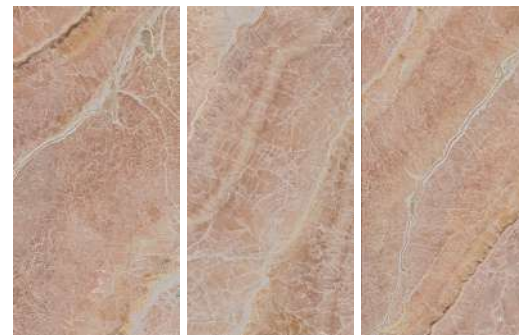
SURFACE:
GAMMA



SILVANA PINK



SURFACE:
GAMMA

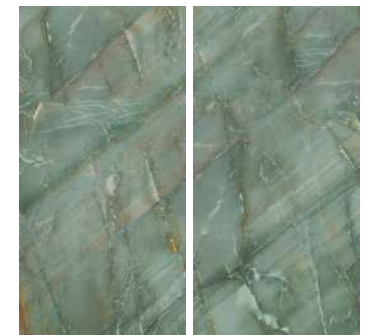


JASPER JADE



Thickness:
6mm, 9mm
12mm, 15mm
20mm

SURFACE:
GAMMA

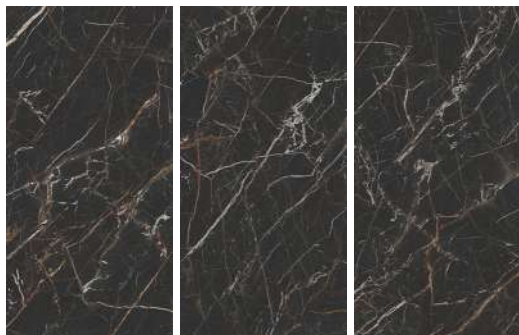




BLACK BONANZA



SURFACE:
GAMMA



Sizes:
160x320cm, 120x320cm
120x280cm, 120x240cm
160x160cm, 120x120cm



PANORAMA GREEN



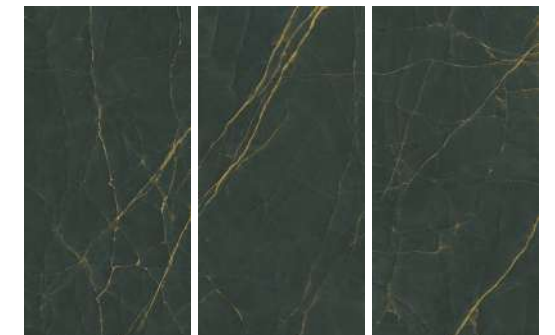
SURFACE:
GAMMA



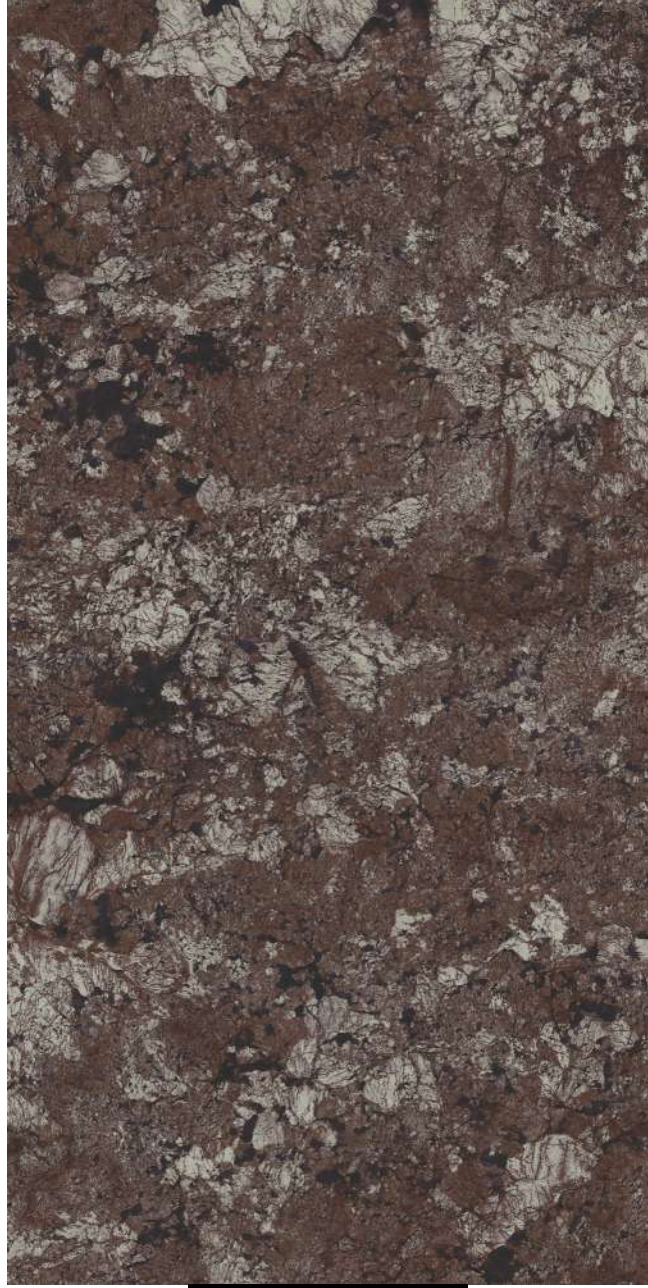
ARANCIO ONYX GREEN



SURFACE:
GAMMA



Thickness:
6mm, 9mm
12mm, 15mm
20mm



MONTE CRISTO



Sizes:
160x320cm, 120x320cm
120x280cm, 120x240cm
160x160cm, 120x120cm

SURFACE:
CRYSTAL POLISH



PATAGONIA BIEGE



SURFACE:
CRYSTAL POLISH



TAJ MAHAL



SURFACE:
CRYSTAL POLISH

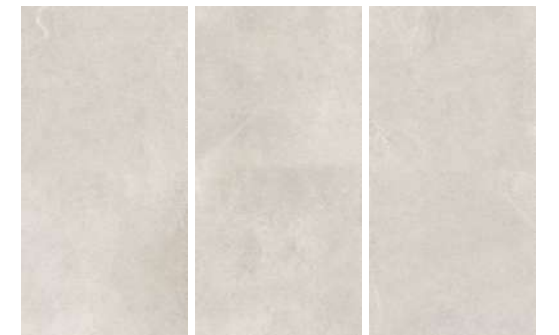


GOTLAND BEIGE



Thickness:
6mm, 9mm
12mm, 15mm
20mm

SURFACE:
GRAVEL





RAPOLINO BEIGE

MELISA GREY



Thickness:
6mm, 9mm
12mm, 15mm
20mm

SURFACE:
CARVE TECH

SURFACE:
CARVE TECH



PREVIEW OF
RAPOLINO BEIGE

Sizes:
160x320cm, 120x320cm
120x280cm, 120x240cm
160x160cm, 120x120cm



CLOUDY ONYX VERDE

AMAZZONITE JADE

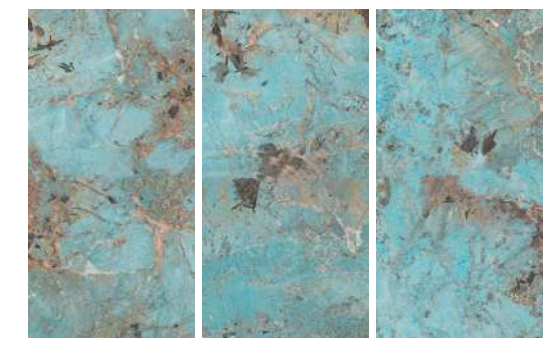


SURFACE:
GALAXY

Thickness:
6mm, 9mm
12mm, 15mm
20mm



SURFACE:
GALAXY



PREVIEW OF

CLOUDY ONYX VERDE

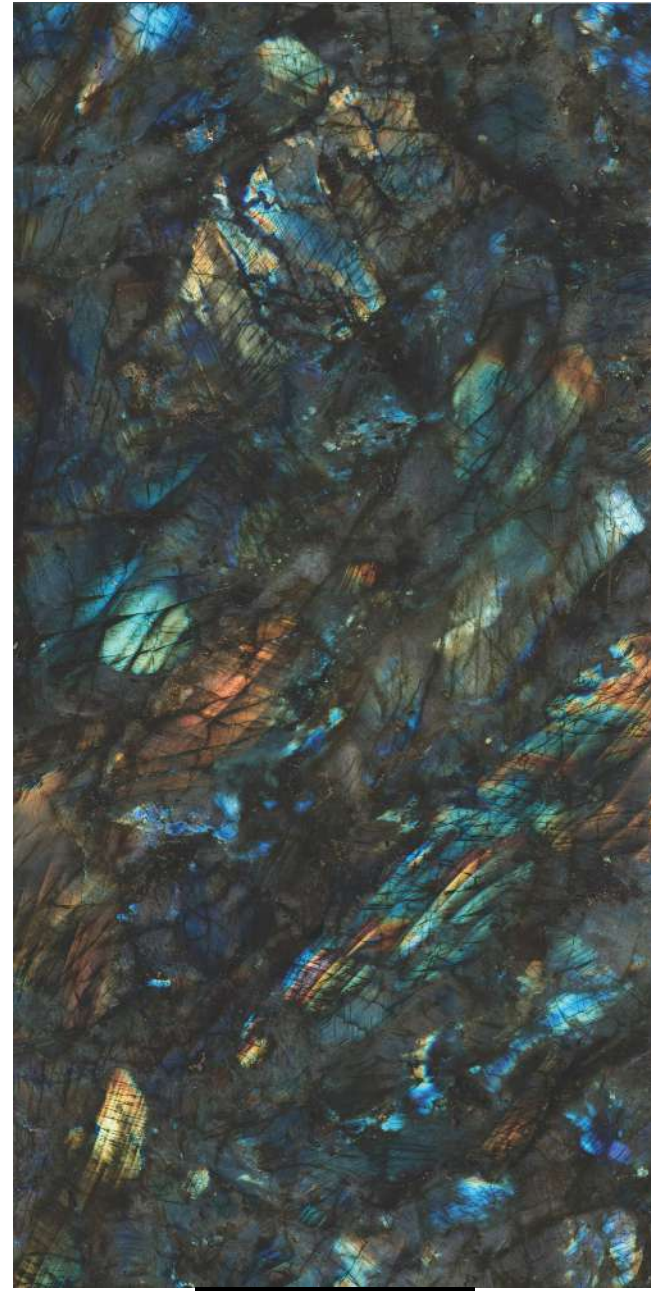
Sizes:
160x320cm, 120x320cm
120x280cm, 120x240cm
160x160cm, 120x120cm



BLACK BONANZA



SURFACE:
GALAXY



LEMURIAN BLUE

SURFACE:
GALAXY

Sizes:
160x320cm, 120x320cm
120x280cm, 120x240cm
160x160cm, 120x120cm

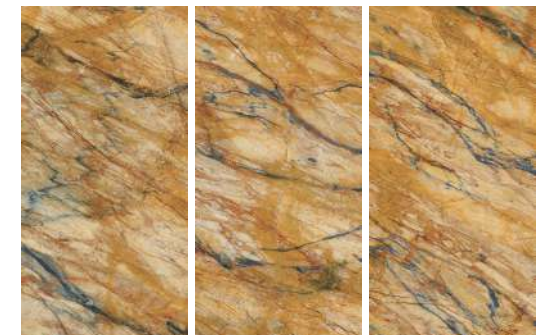
Thickness:
6mm, 9mm
12mm, 15mm
20mm



GOLDEN DUNE



SURFACE:
GALAXY



TECHNICAL SPECIFICATION

STANDARD AS PER ISO-1 3006/EN1 4411 (GROUP B1a)

CHARACTERISTIC	REQUIRMENTS	MEAN VALUE OF GRANICER	TEST MEIHOD
Regulatory Properties			
Deviation in length & width	±0.5 %	±0.1 %	ISO-10545-2
Deviation in thickness	±5.0 %	±4.0 %	ISO-10545-2
Straightness in side	±0.5 %	±0.1 %	ISO-10545-2
Rectangularity	±0.5 %	±0.1 %	ISO-10545-2
Surface flatness	±0.5 %	±0.2 %	ISO-10545-2
Color difference	Unaltered	No change	ISO-10545-16
Glossiness	As per mfg.	Min 90%	GLOSSOMETER
Structural Properties			
Water absorption	< 0.50 %	< 0.05 %	ISO-10545-3
Apparent density	> 2.0 g/cc	> 2.10 g/cc	DIN 51082
Massive Mechanical Properties			
Modulus of rupture	Min. 35 N/mm ²	Min. 40 N/mm ²	ISO-10545-4
Breaking strength	Min. 1300 N	Min. 2000 N	ISO-10545-4
Impact resistance	As per mfg.	Min. 0.55	ISO-10545-5
Surface Mechanical Properties			
Surface abrasion resistance	As per mfg.	Min. Class-3	ISO-10545-7
MOH's hardness	As per mfg.	Min. 4	EN 101
Thermo Hygrometric Properties			
Frost resistance	No damage	No damage	ISO-10545-12
Thermal shock resistance	No damage	No damage	ISO-10545-9
Moisture expansion	Nil	Nil	ISO-10545-10
Thermal expansion (COE)	Max. 90 x 10 ⁻⁶	Max. 6.5 x 10 ⁻⁶	ISO-10545-8
Crazing resistance	As per mfg.	Min. 10 Cycle	ISO-10545-11
Chemical Properties			
Chemical resistance	No damage	No damage	ISO-10545-13
Stain resistance	Resistant	Resistant	SO-10545-14
Safety Properties			
Slip resistance	As per mfg.	> 0.40	ISO-10545-17
Fire resistance	As per mfg.	Fireproof	N. A.
Lead & Cadmium given off by glazed tiles	As per mfg.	Does not yield Pb & Cd	ISO-10545-15

Care & maintenance

Thanks to the characteristics of the production process (high firing temperature, raw materials of great quality, sinterization process), the surface of the Granicer Tiles & Slabs slabs are waterproof (the water absorption is minimum). Therefore the dirt cannot penetrate, but it is necessary to remove it from the surface. For cleaning the surface, do not use detergents containing waxes or waxing products. In order to avoid the forming of greasy layers, for choosing the most appropriate detergent, refer to the following table.

After the installation of floors, particularly those made with polished materials, the surfaces should be adequately protected with particle board or other suitable materials in order to protect the surface from dirt and damage due to on-site processing. Below are some of the substances indicated to remove stains. The instructions are grouped by type of product and do not contain references to specific detergents. However, these features are clearly indicated on the labels of detergents available in the market.

Care advice

- Granicer Tiles & Slabs are high temperature resistant. However, it is always advisable to use an adequate pan-support whenever hot cookware should be placed on the slab surface. Use a chopping board to cut/prepare foods instead of bare Tile/Slab surfaces.
- Granicer Tiles & Slabs are very tough and have high impact resistance, However- avoid falling of sharp object /heavy substances directly on to the surface.
- Granicer Tiles & Slabs matt finishes have high scratch resistance compare to polished, satin & pearl finishes. However, avoid dragging, scrolling or moving heavy objects on the surface. Instead lift & move the objects from one place to another
- Avoid using strong acids high concentration of floor cleaners. Manufacturer guidelines on the use of floor cleaners should be strictly followed.
- Possible breakages can be repaired with adequate and specific resins. Before repairing, check that the colour of the resins that are used for the reparation operations and the slab colour are the same.
- If stains have contracted on the Tile or Slab surface for a short time, they can be easily removed with the use of a rag and hot water. Avoid movement on damp surface.

Cleaning advice

Cement adhesive - Acidic detergent

Grouting remnants - Acidic detergent

Organic stains - Alkaline detergent

Felt pen - Solvent (Methylated Spirits, Acetone, Ethanol)

Rubber remnants - Alkaline detergent, Solvent

Pencil marks - Soft rubber

Grease and dirt - Bicarbonate and water

Dyes - Dilute bleach solution

Iodine or bromine Blood - Acidic detergent, hydrogen peroxide or dilute bleach solution, ammonia

Silicone - Hydrogen peroxide or dilute bleach solution

Coffee, Tea, Food, Fruit, - Vitro-ceramic hob scraper, Cloth soaked in acetone. Normal detergent dissolved in hot water

Juice or Make-up - hydrogen peroxide or bleach

Disclaimer: Product images shown in this Catalogue are for Design Representation. All efforts are made to show accurate colour of the product but actual product colour may differ from the printed image due to printing limitations. It is advised to see the product samples for actual colour reference. • Shade variation is inherent characteristic of ceramic products. Hence different sizes and batches of same design may have variation in colours. • Please follow the Tile Laying instructions printed on the box before installing the Tiles. • Company may change the designs, colours, randomness or book-match without prior intimation. • Due to continuous technology upgrade technical specification of the products may change without prior intimation.

GRANICER

CERAMICA INDIANA

Corporate Office
COMET GRANITO PVT. LTD.
8-A, N/H, Nava Jambudiya,
Morbi - 363 642, Gujarat, INDIA
+91 8000 815 815, info@granicer.in

World
EXPORT
+91 9825 215 815
+91 9033 474 501
export@granicer.in



www.granicer.in

